

Clearance Publish

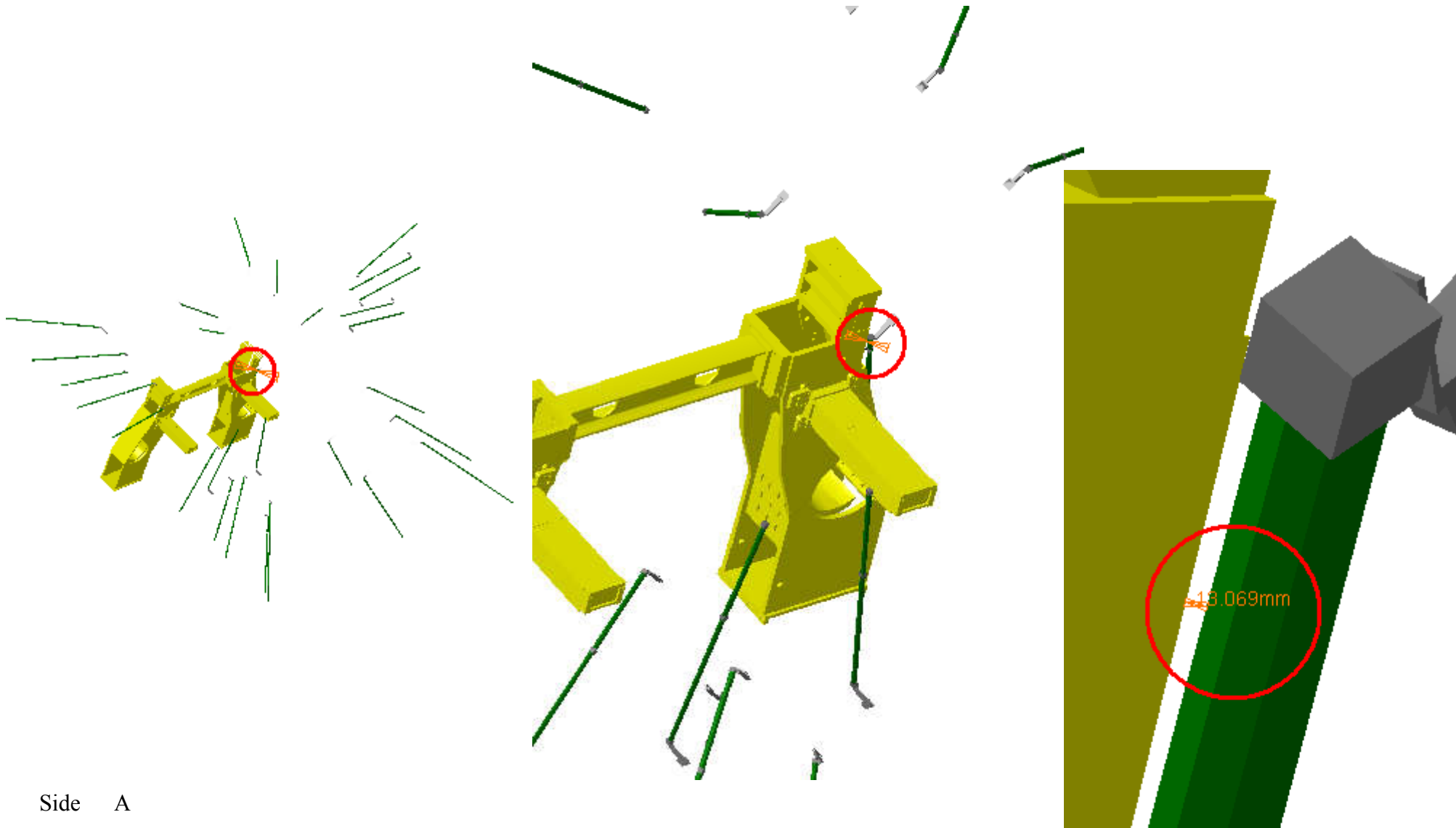
Clearance=50mm



Clearance Computation Specification			
Products Selected			
AT672145MQ Reinforcement of 28 Projective Extention Plates	ATCVHB_0002 STANDARD PAIR OF FEET A1 (C1) - DETAILED MODEL FOR STANDARDS	13.07	Not inspected
	ATCVHB_0002 M STANDARD PAIR OF FEET A1 (C1) - DETAILED MODEL FOR STANDARDS	13.08	Not inspected
	ATCNMA_0015 SECTOR 10 SIDE C (A) - REFERENCE ALIGNMENT SYSTEM AND	25.62	Not inspected
	ATCNMA_0018 SECTOR 16 SIDE C (A) - REFERENCE ALIGNMENT SYSTEM AND	25.62	Not inspected
	ATCVTB_0021 RING C3 SECTOR 09 - TB WARM STRUCTURE	27.1	Not inspected
	ATCVTB_0053 RING A3 SECTOR 09 - TB WARM STRUCTURE	27.45	Not inspected
	ATCNTB_0002 TB FEET COIL - SECTOR 12	49.99	Not inspected
	ATCNTB_0007 TB FEET COIL - SECTOR 14	49.72	Not inspected
	AT602157MQ MCB Muon Barrel Chambers Detailed	19.98	Not inspected

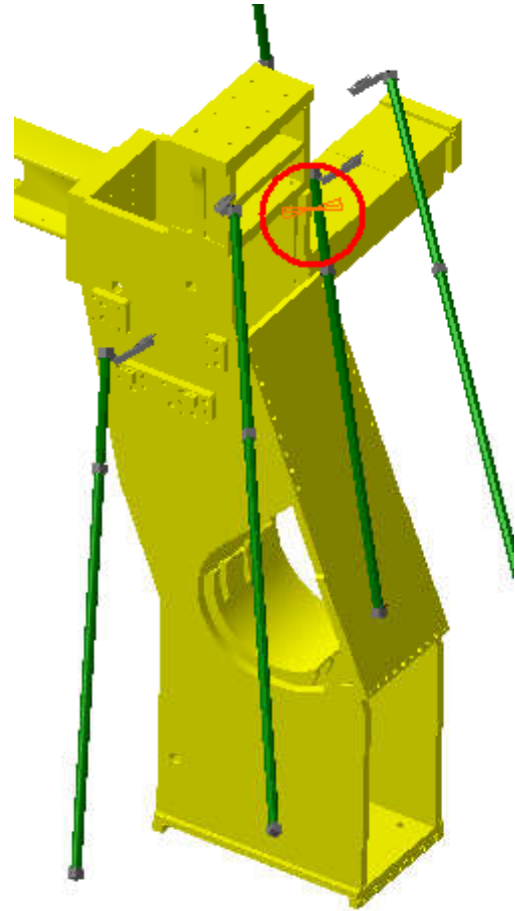
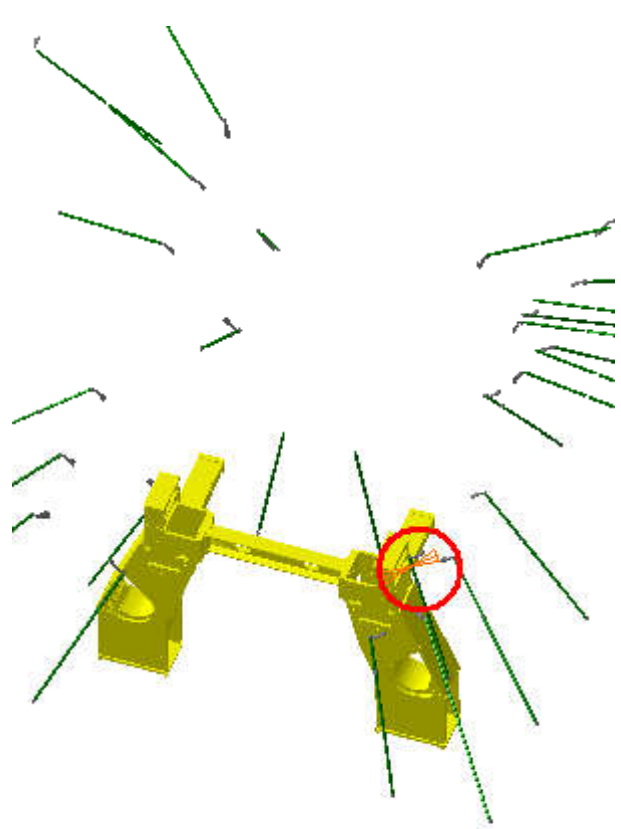
Computation Result:

AT672145MQ Reinforcement of 28 Projective Extension Plates	ATCVHB_0002 STANDARD PAIR OF FEET A1 (C1) - DETAILED MODEL FOR STANDARDS	Vector coordinate $\Delta X \approx 8.6\text{mm}$ $\Delta Y \approx -0.12\text{mm}$ $\Delta Z \approx -9.84\text{mm}$	13.07mm	Not inspected
--	--	--	---------	---------------



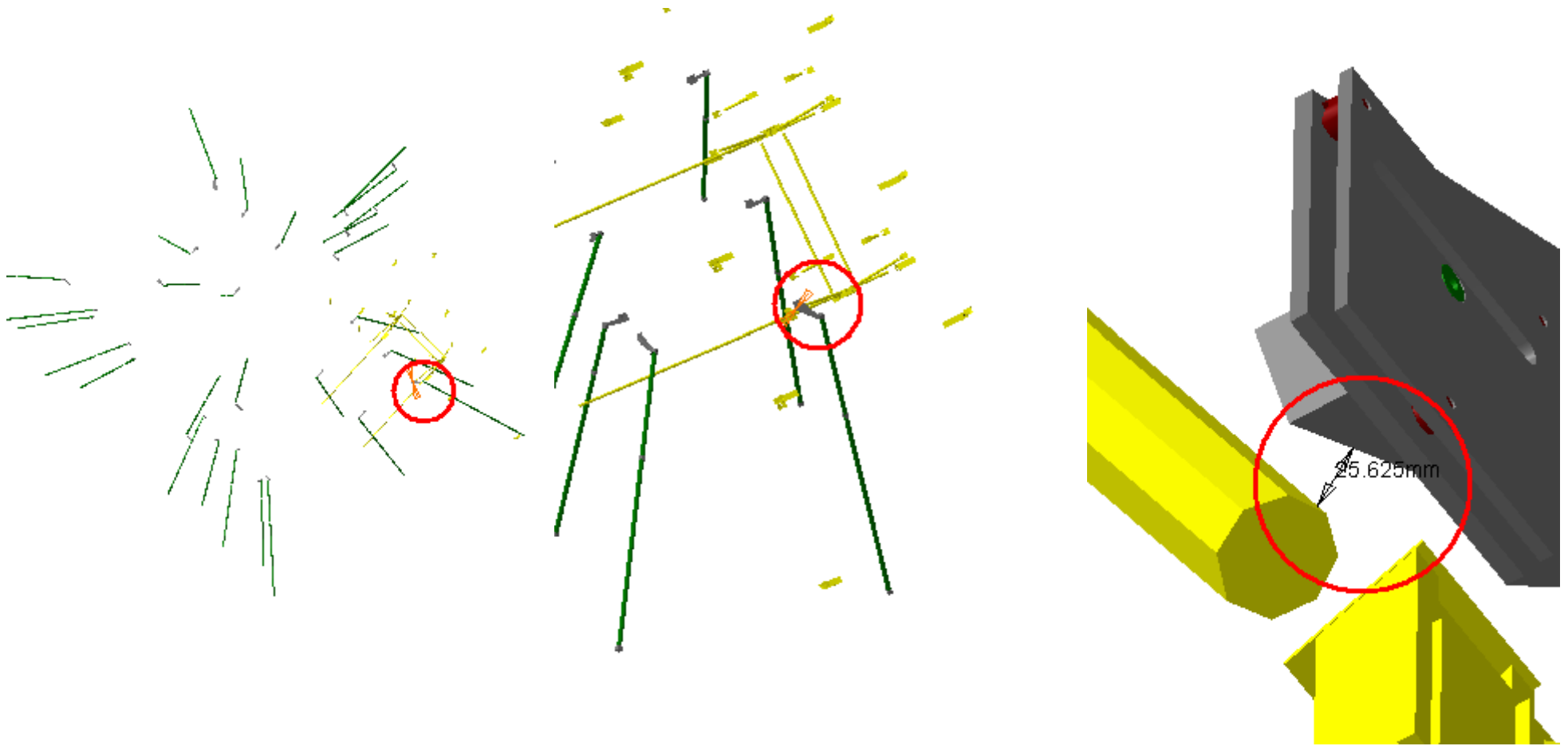
Side A
Sector 12

AT672145MQ Reinforcement of 28 Projective Extension Plates	ATCVHB_0002 M STANDARD PAIR OF FEET A1 (C1) - DETAILED MODEL FOR STANDARDS	Vector coordinate $\Delta X \approx 8.6\text{mm}$ $\Delta Y \approx 0.12\text{mm}$ $\Delta Z \approx 9.85\text{mm}$	13.08mm	Not inspected
--	--	--	---------	---------------



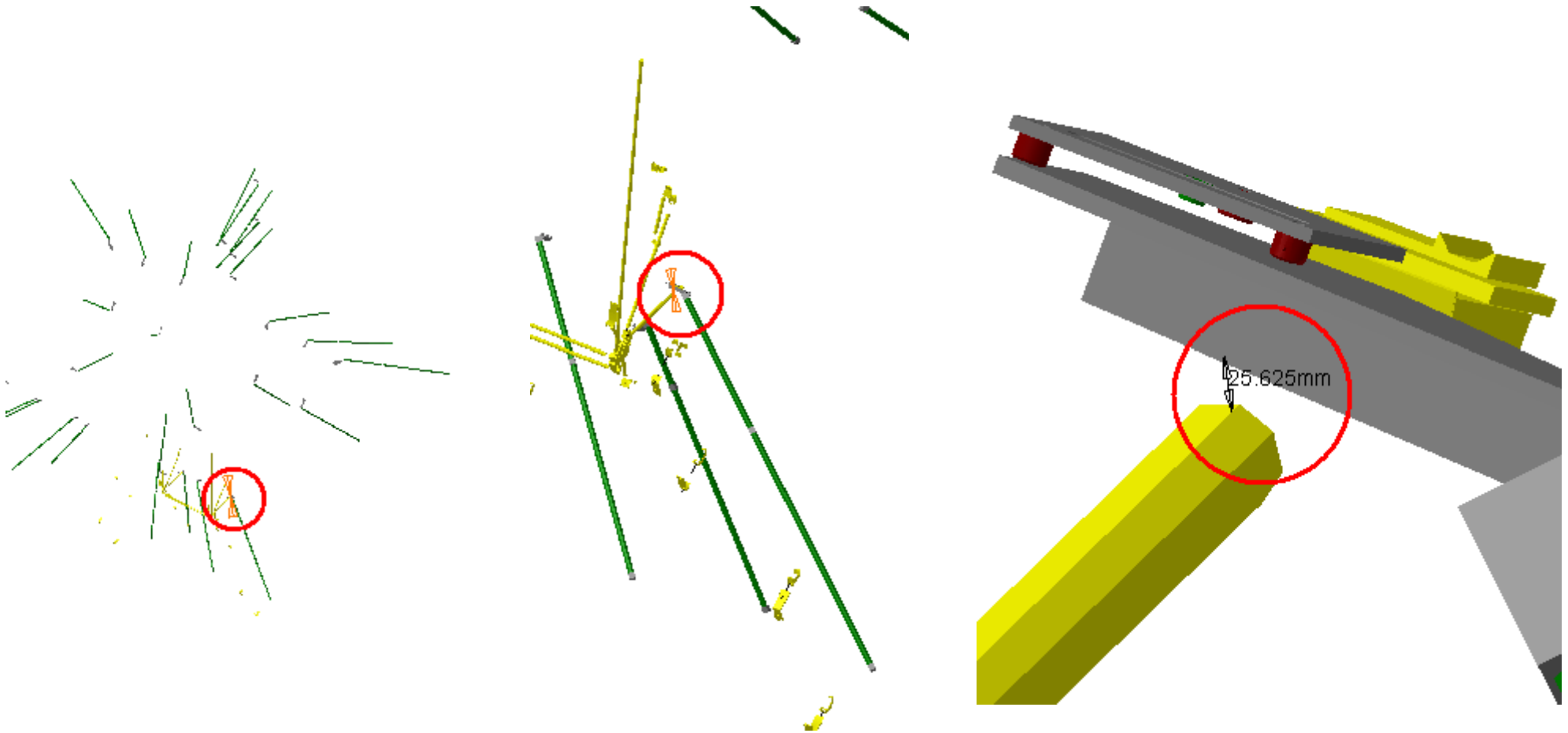
Side C
Sector 12

AT672145MQ Reinforcement of 28 Projective Extention Plates	ATCNMA_0015 SECTOR 10 SIDE C (A) - REFERENCE ALIGNMENT SYSTEM AND	Vector coordinate $\Delta X \approx -7.26\text{mm}$ $\Delta Y \approx -22.93\text{mm}$ $\Delta Z \approx 8.84\text{mm}$	25.62mm	Not inspected
---	---	--	---------	---------------



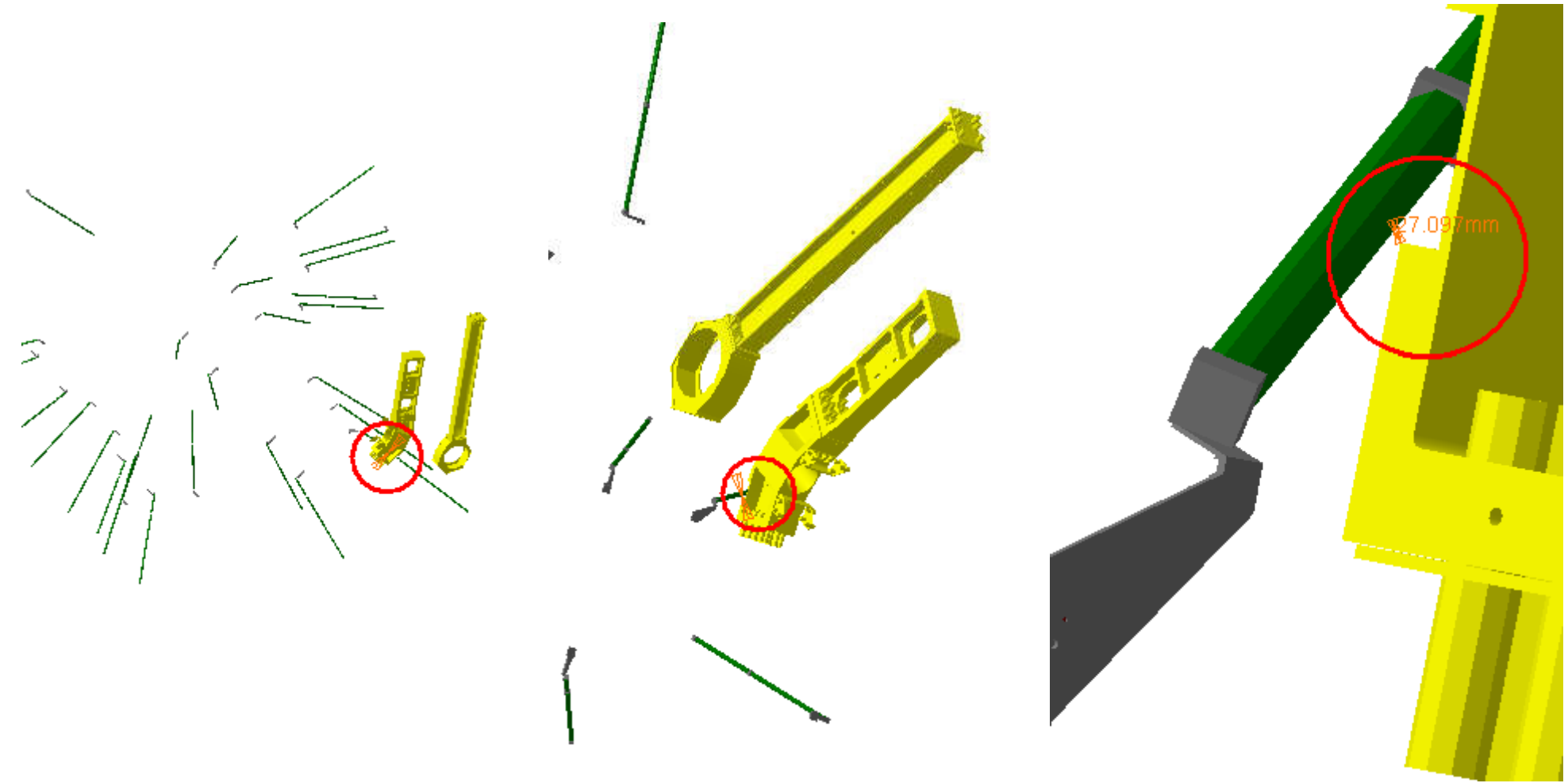
Side C
Sector 10

AT672145MQ Reinforcement of 28 Projective Extention Plates	ATCNMA_0018 SECTOR 16 SIDE C (A) - REFERENCE ALIGNMENT SYSTEM AND	Vector coordinate $\Delta X \approx 7.62\text{mm}$ $\Delta Y \approx -22.93\text{mm}$ $\Delta Z \approx 8.84\text{mm}$	25.62mm	Not inspected
---	---	---	---------	---------------



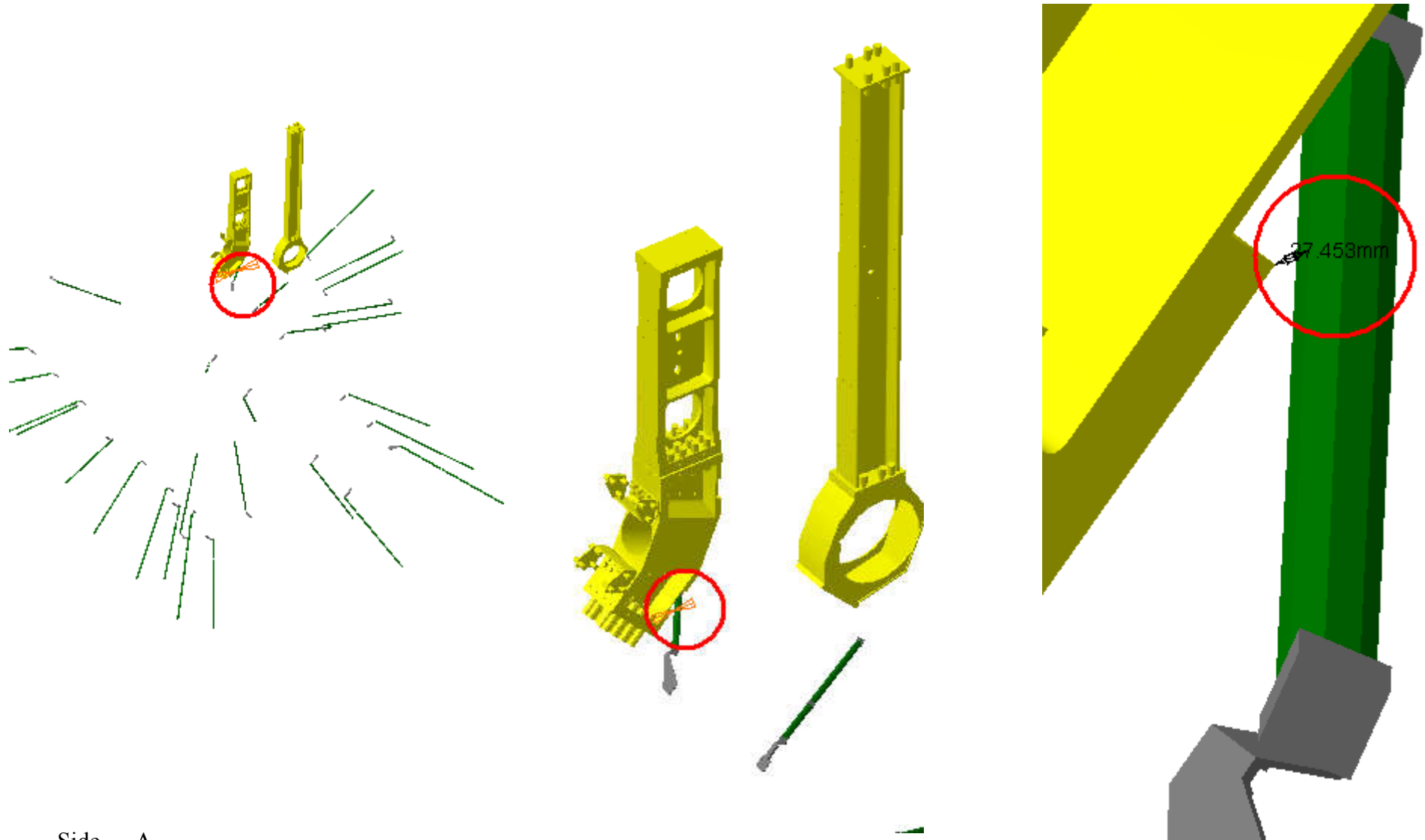
Side C
Sector 15

AT672145MQ Reinforcement of 28 Projective Extention Plates	ATCVTB_0021 RING C3 SECTOR 09 - TB WARM STRUCTURE	Vector coordinate $\Delta X \approx 21.92\text{mm}$ $\Delta Y \approx -10.34\text{mm}$ $\Delta Z \approx 12.12\text{mm}$	27.1mm	Not inspected
---	--	---	--------	---------------



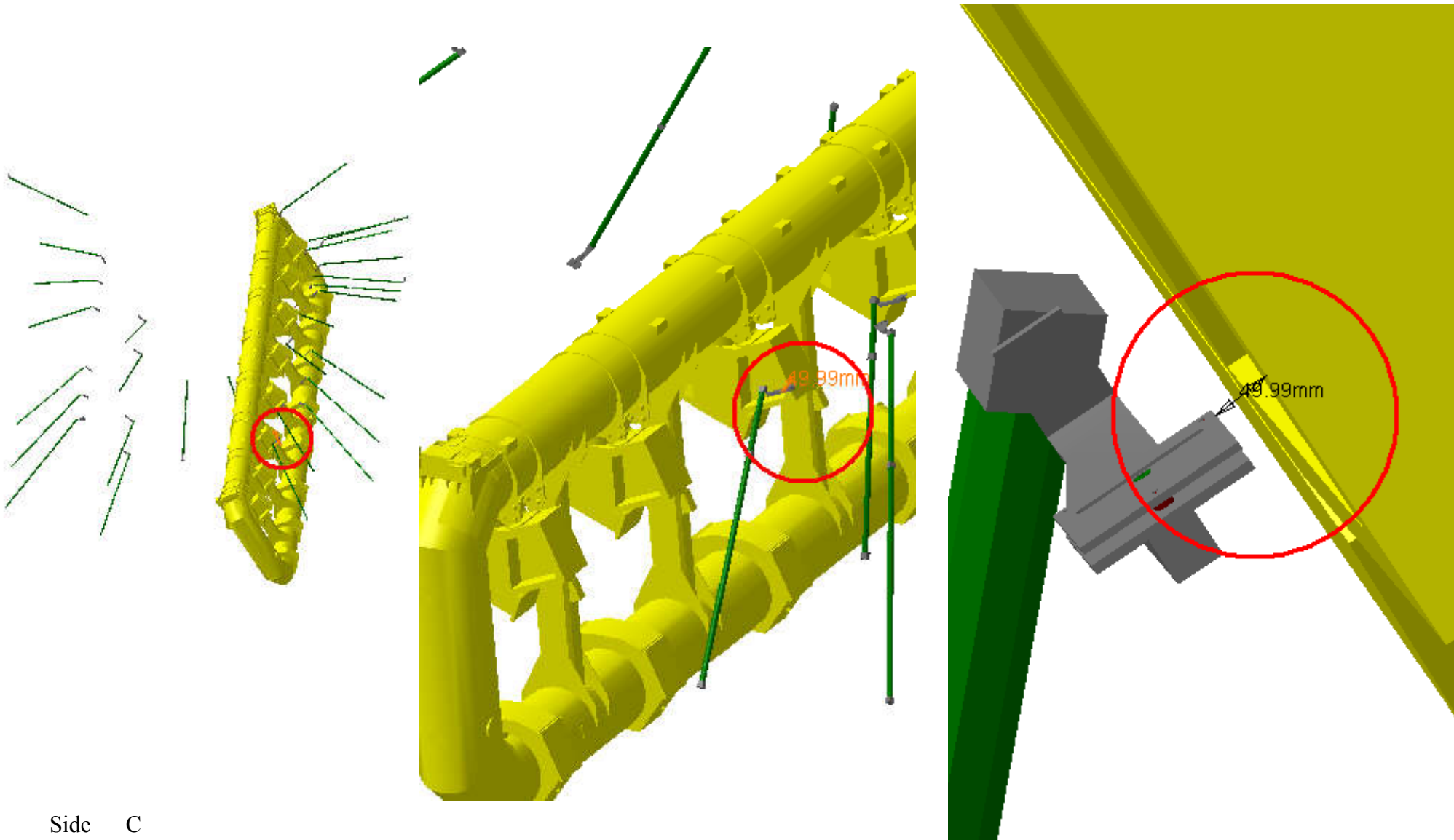
Side C
Sector 10

AT672145MQ Reinforcement of 28 Projective Extention Plates	ATCVTB_0053 RING A3 SECTOR 09 - TB WARM STRUCTURE	Vector coordinate $\Delta X \approx 22.2\text{mm}$ $\Delta Y \approx -10.78\text{mm}$ $\Delta Z \approx -12.02\text{mm}$	27.45mm	Not inspected
---	--	---	---------	---------------



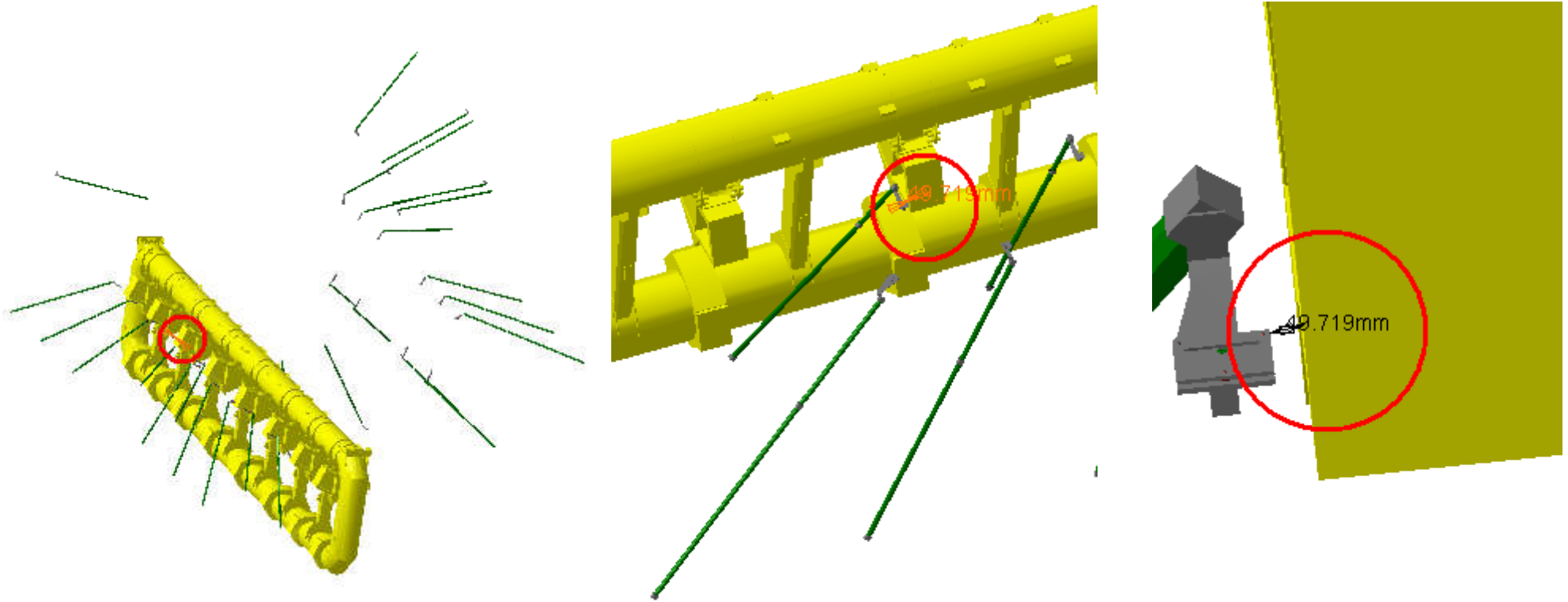
Side A
Sector 10

AT672145MQ Reinforcement of 28 Projective Extention Plates	ATCNTB_0002 TB FEET COIL - SECTOR 12	Vector coordinate $\Delta X \approx 10.99\text{mm}$ $\Delta Y \approx -11.57\text{mm}$ $\Delta Z \approx -47.38\text{mm}$	49.99mm	Not inspected
---	---	--	---------	---------------



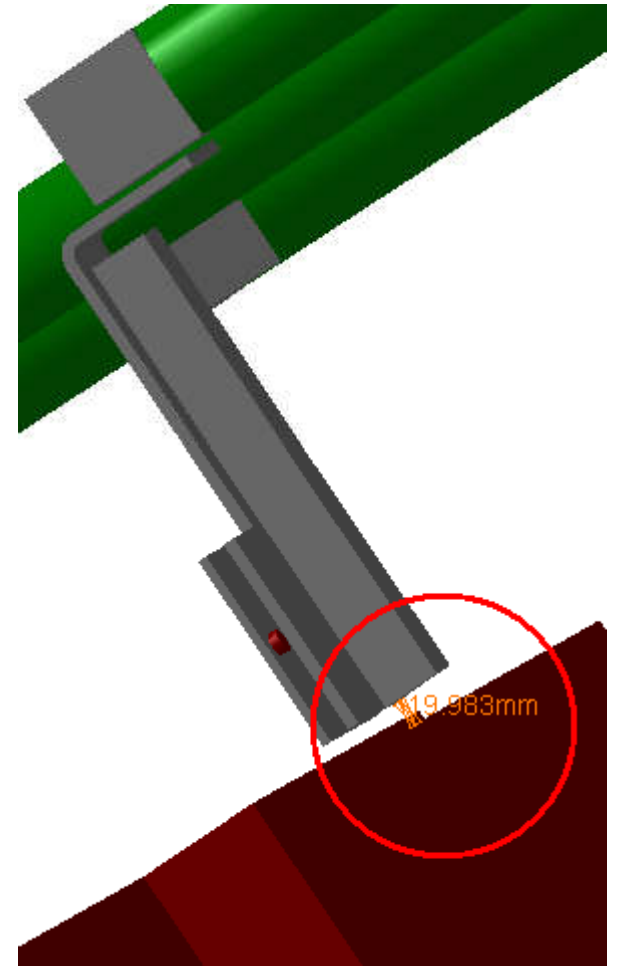
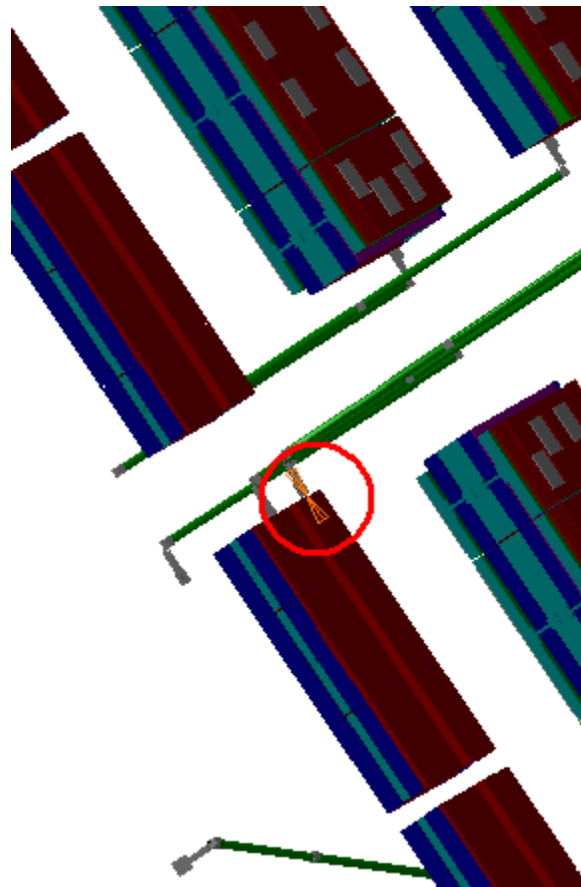
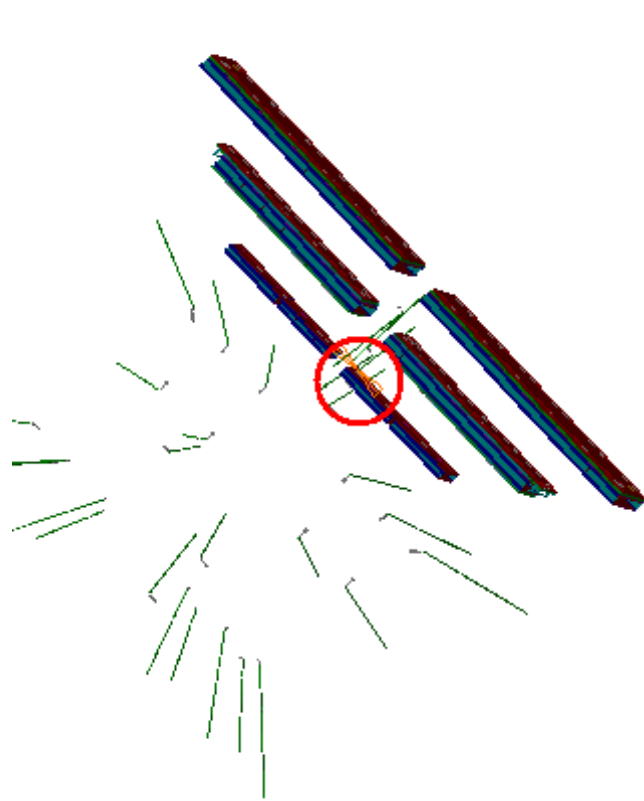
Side C
Sector 11

AT672145MQ Reinforcement of 28 Projective Extention Plates	ATCNTB_0007 TB FEET COIL - SECTOR 14	Vector coordinate $\Delta X \approx -10.26\text{mm}$ $\Delta Y \approx -9.67\text{mm}$ $\Delta Z \approx 47.68\text{mm}$	49.72mm	Not inspected
---	---	---	---------	---------------



Side A
Sector 15

AT672145MQ Reinforcement of 28 Projective Extension Plates	AT602157MQ MCB Muon Barrel Chambers Detailed	Vector coordinate $\Delta X \approx 0\text{mm}$ $\Delta Y \approx 0.25\text{mm}$ $\Delta Z \approx 19.98\text{mm}$	19.98mm	Not inspected
--	--	---	---------	---------------



Side C
Sector 7