



## Clash Publish

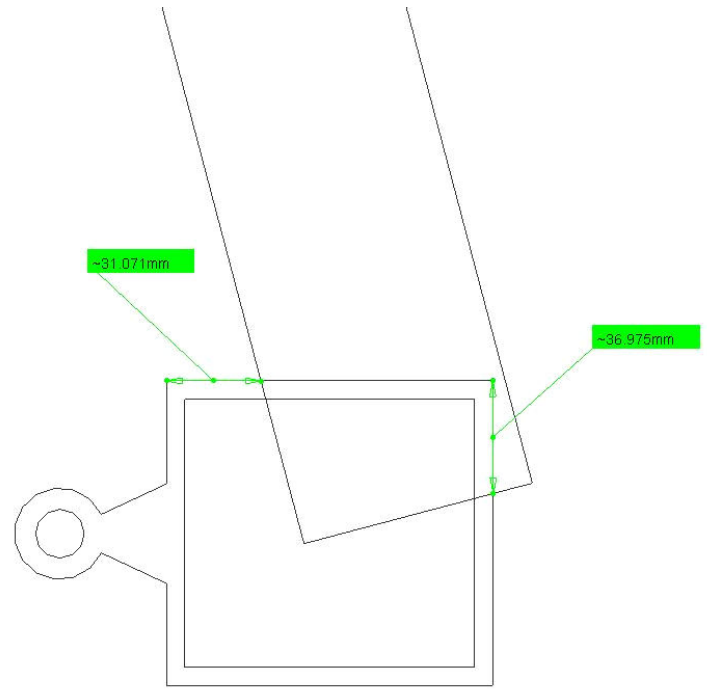
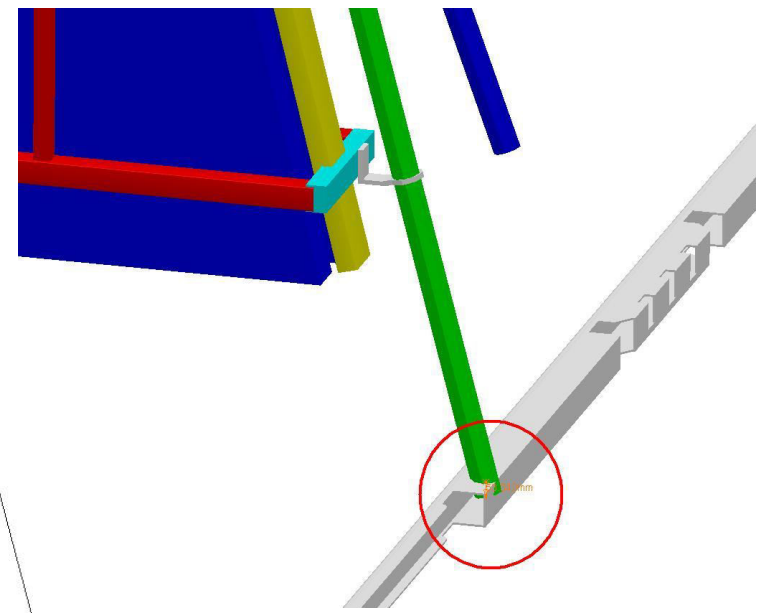
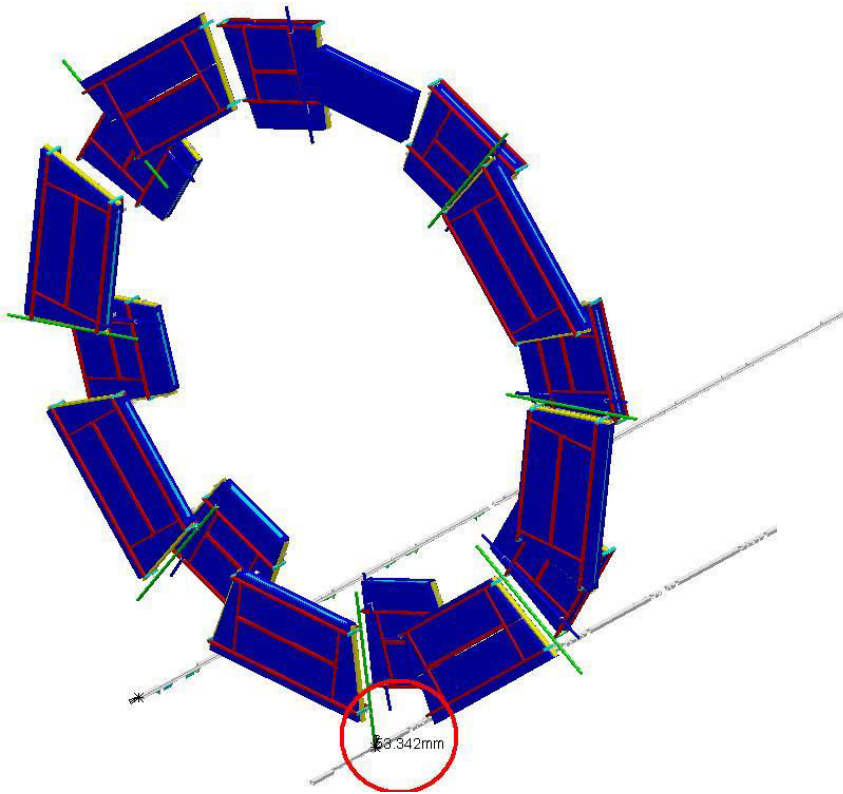
Clash Computation Specification			
Products Selected		Value	Status
AT612302MQ – BOC Rail Feet, SECTOR 13	NMC_0019 - FOOT B WITH BRACKET HOLES - MAIN BOLTS AND WELDINGS	53.3 mm	Relevant
	NH_0001 - HF TRUCK IN ACCESS POSITION SIDE C	-51 mm	Relevant
	VHB_0001 - CENTRAL PAIR OF FEET B *	2 mm	Relevant
	VHB_0008 - FOOT B WITH BRACKET HOLES **	7 mm	Relevant
	VHB_0002 - STANDARD PAIR OF FEET A1 (C1) ***	2 mm	Relevant

\* This conflict exists for all Feet on both side US15 and USA15

\*\* Conflict exists for all Feet everywhere with washer on both side US15 and USA15

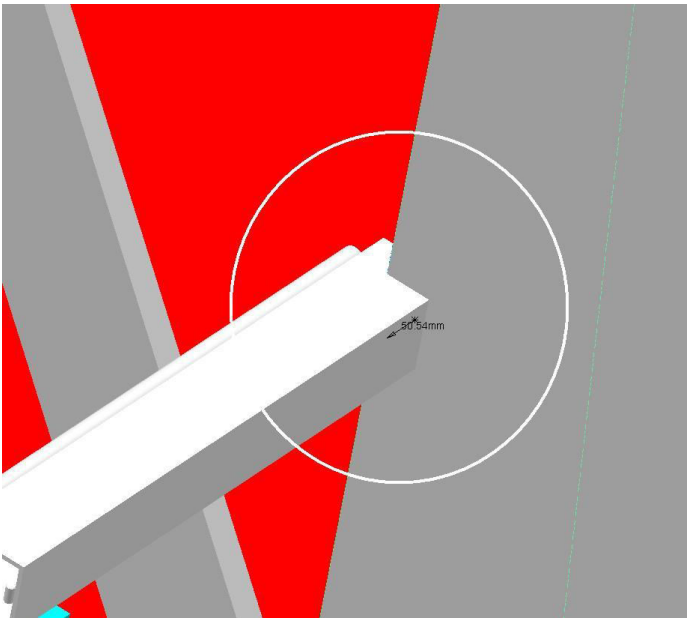
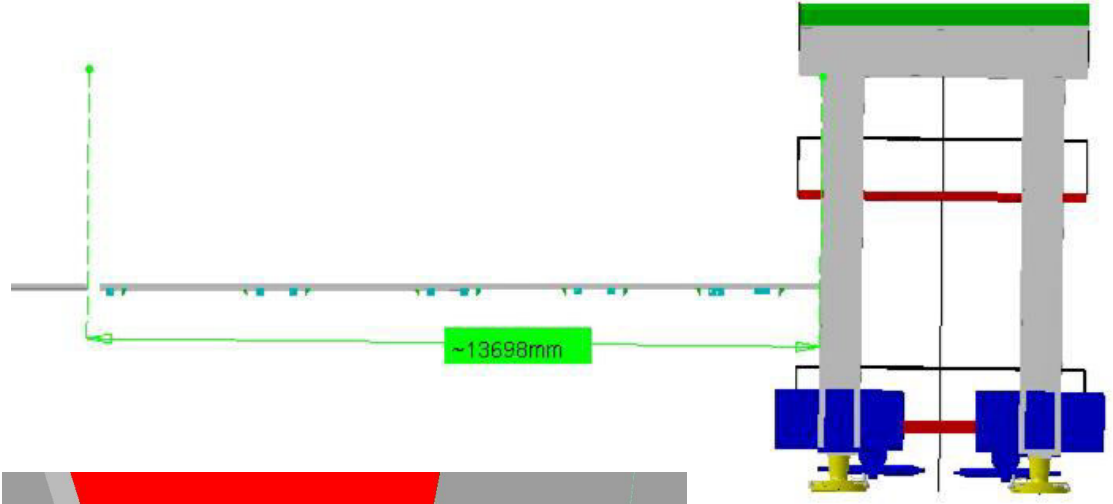
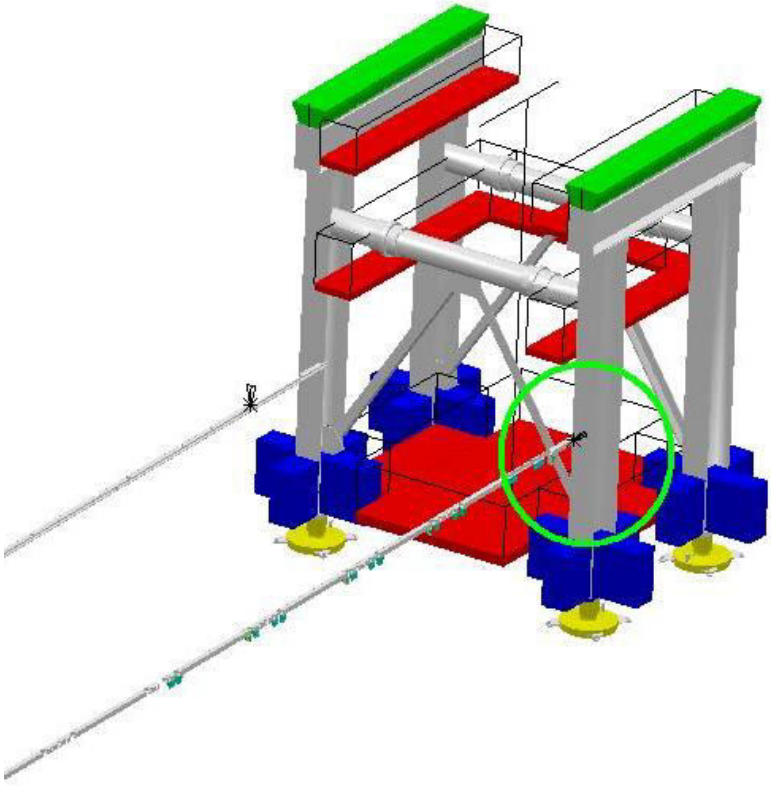
\*\*\* Conflict exists for all Feet on both side US15 and USA15 except of end feet. Conflict similar to clash with VHB\_0001

AT612302MQ – BOC Rail Feet, SECTOR 13	NMC_0019 - FOOT B WITH BRACKET HOLES - MAIN BOLTS AND WELDINGS	Clash	-53.3 mm	Relevant
--	---	-------	----------	----------



Clash value: ~ 53.3 mm  
SIDE C, Sector 13

AT612302MQ – BOC Rail Feet, SECTOR 13	NH_0001 - HF TRUCK IN ACCESS POSITION SIDE C	Clash	51mm	Relevant
--	--	-------	------	----------

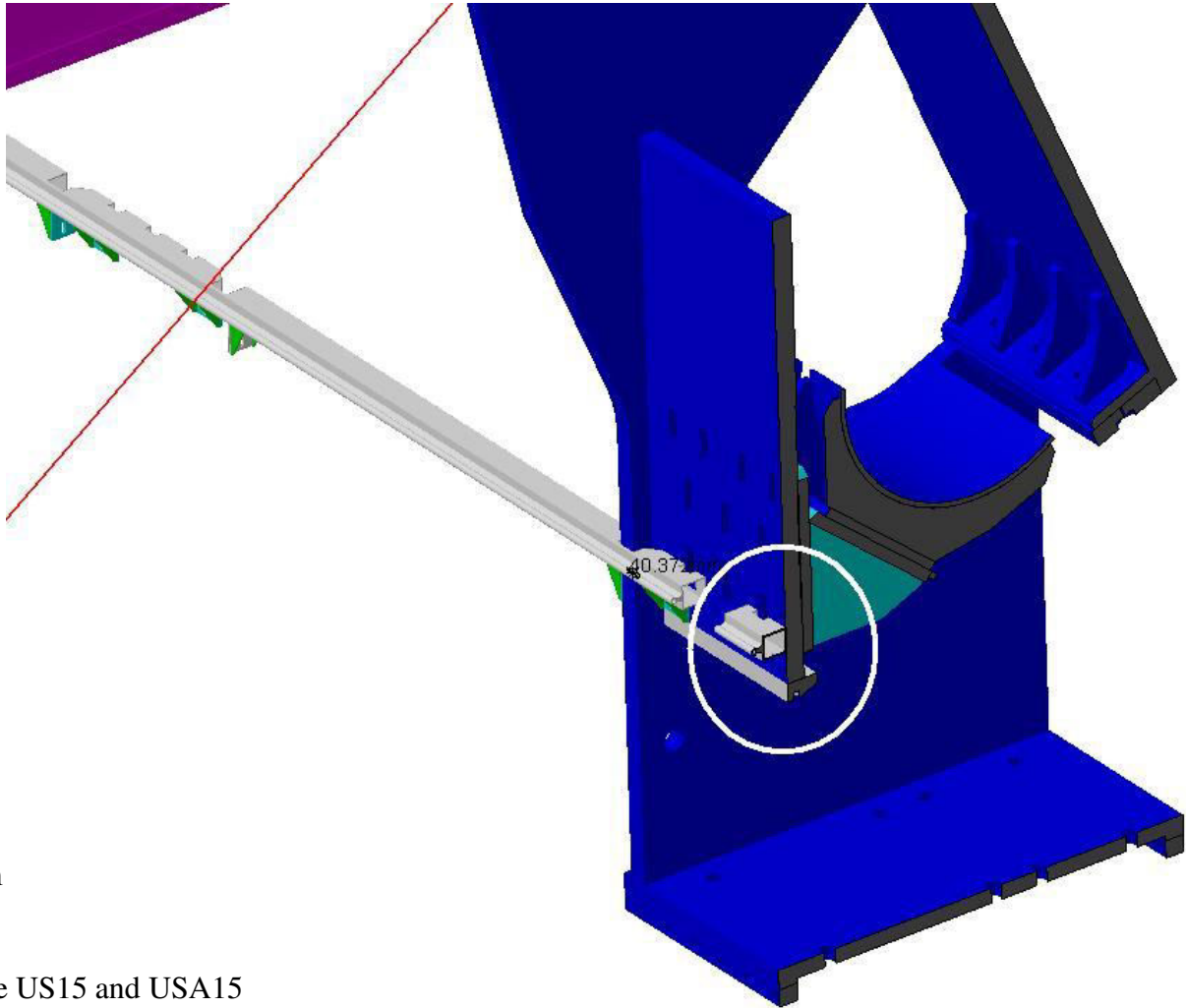


Clash value: ~ 51 mm

SIDE C, Sector 13

Be careful with cut-out dimensions,  
while this is prototype !!!

AT612302MQ – BOC Rail Feet, SECTOR 13	VHB_0001 - CENTRAL PAIR OF FEET B	Clash	-2 mm	Relevant
--	-----------------------------------	-------	-------	----------

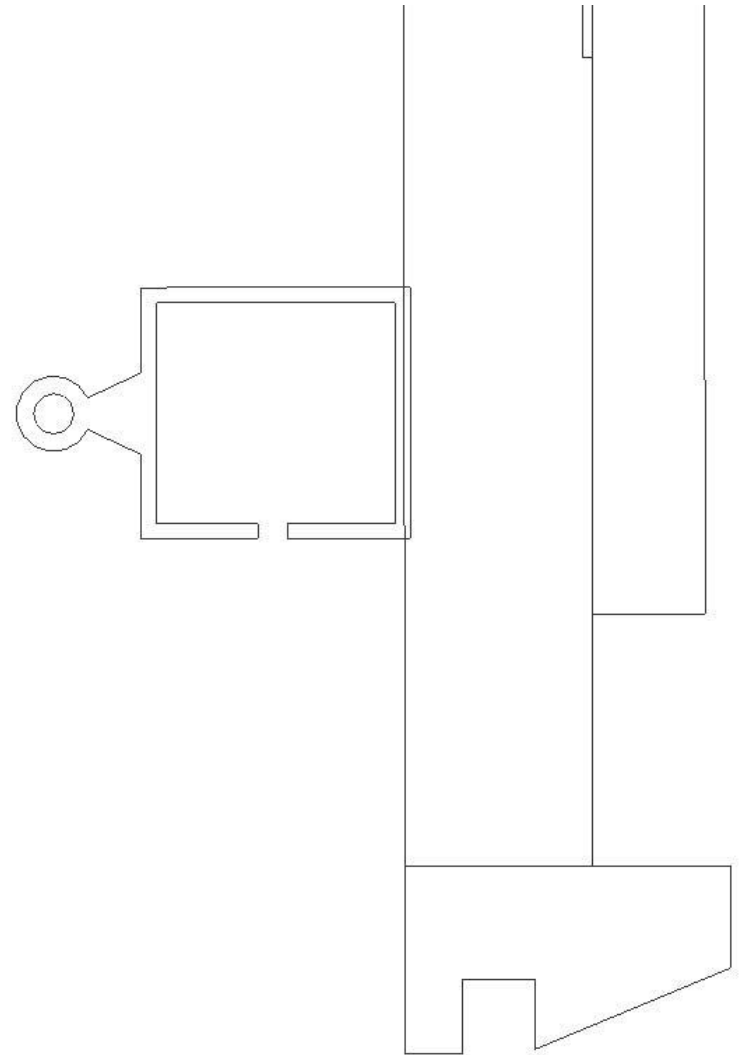
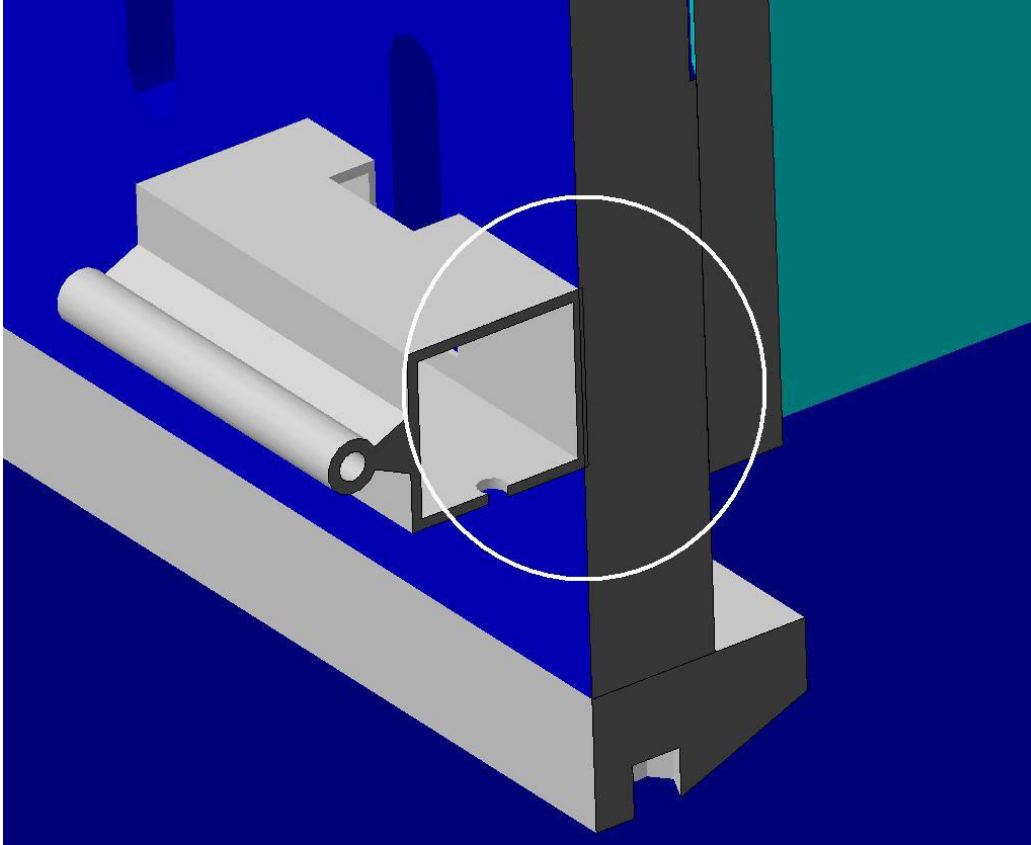


Clash value: ~ 2 mm

SIDE C, Sector 13

Clash is on both Side US15 and USA15

# Clash View:



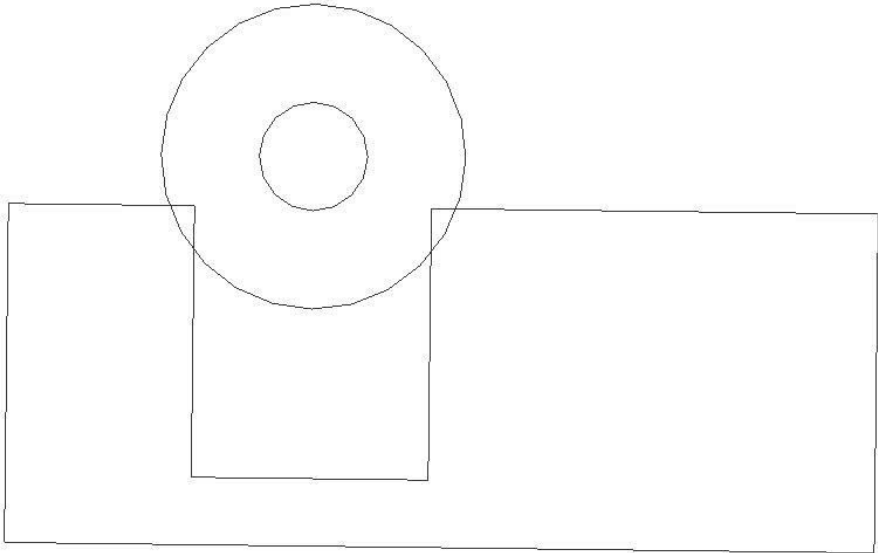
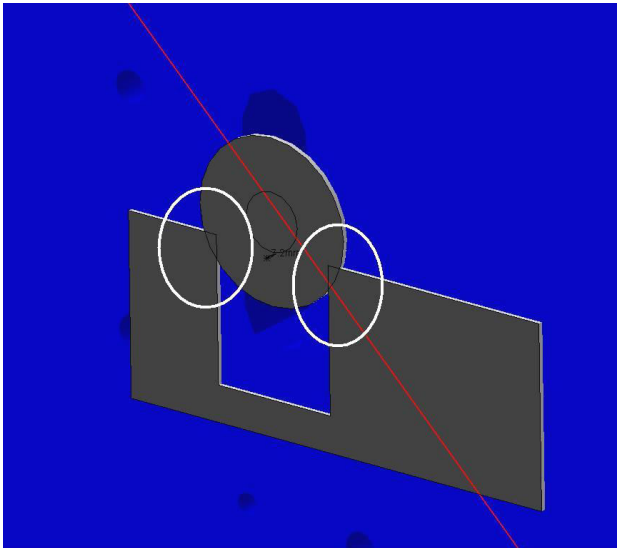
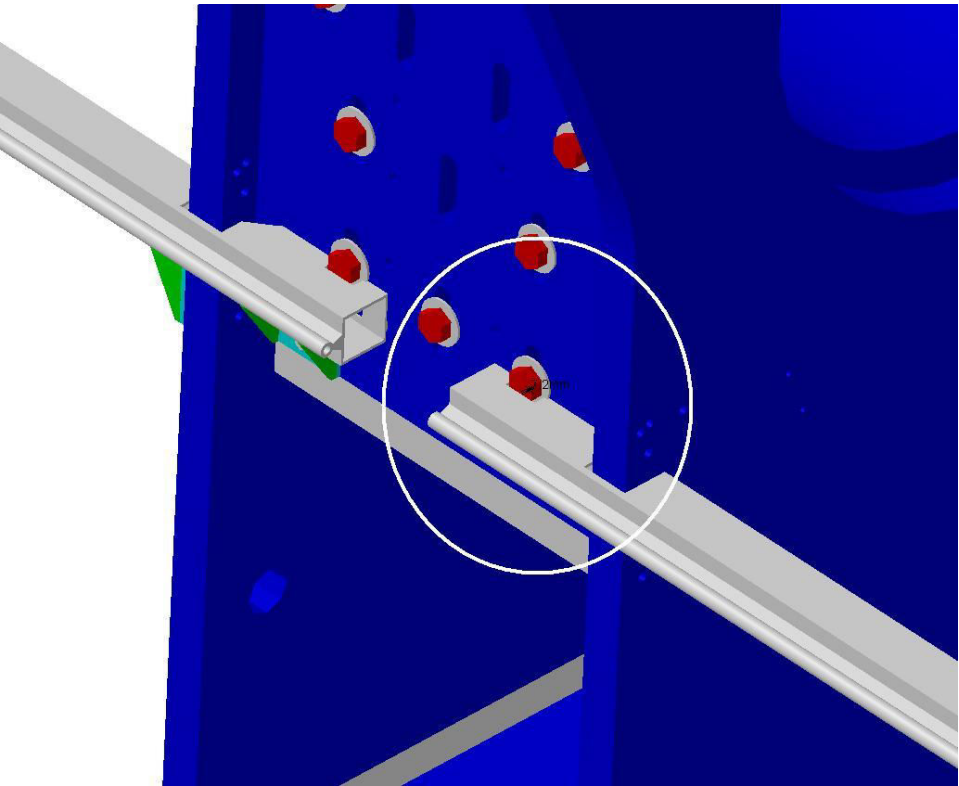
AT612302MQ – BOC Rail Feet,  
SECTOR 13

VHB\_0008 - FOOT B WITH BRACKET HOLES

Clash

-7 mm

Relevant



Clash value: ~ 7 mm

SIDE C, Sector 13

Clash exists everywhere with washer

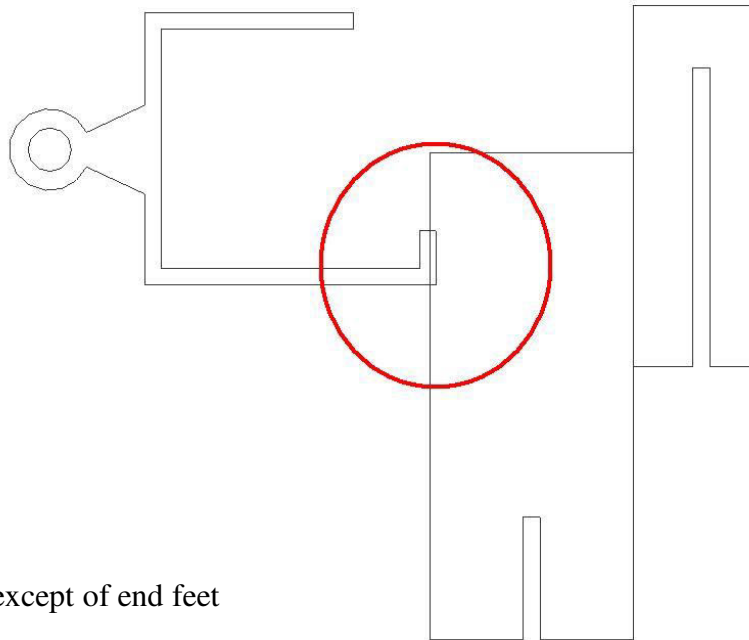
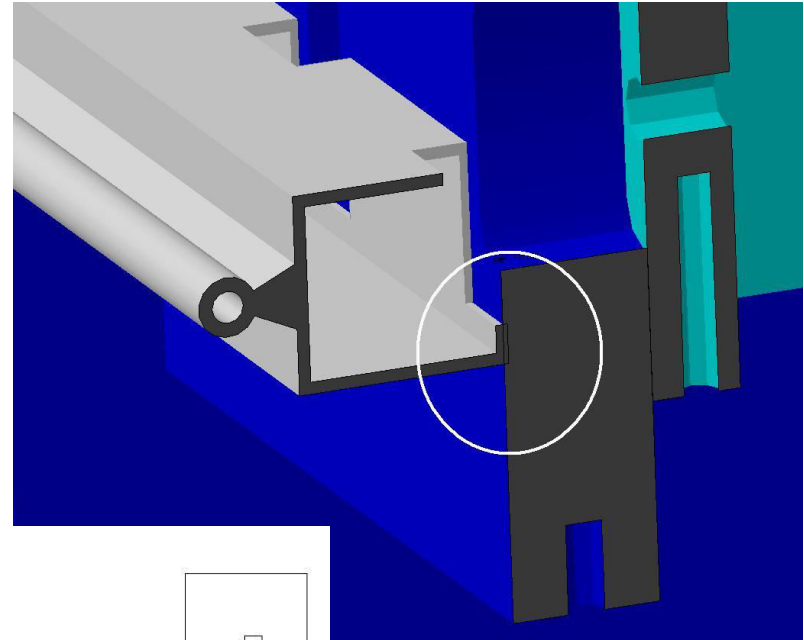
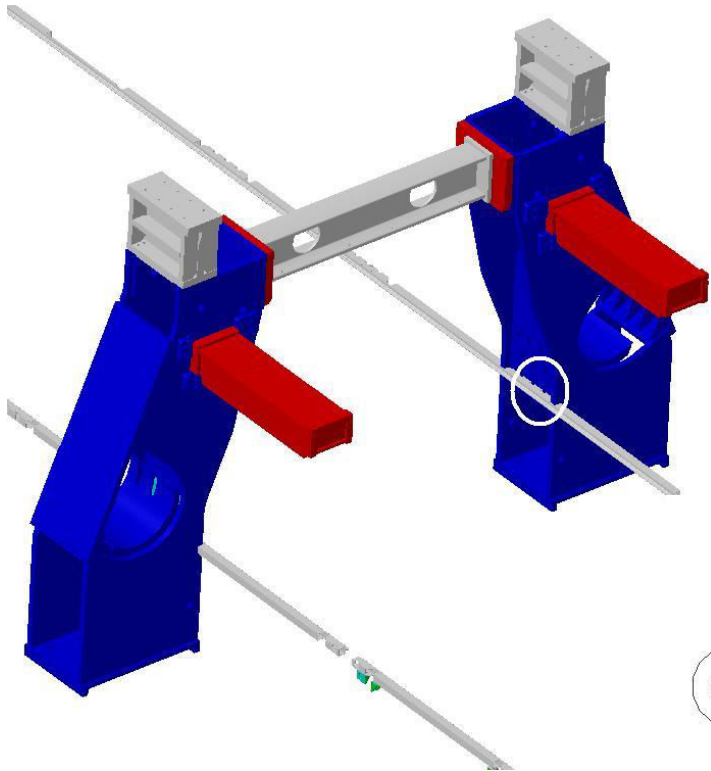
AT612302MQ – BOC Rail Feet,  
SECTOR 13

VHB\_0002 - STANDARD PAIR OF FEET A1 (C1)

Clash

-2 mm

Relevant



Clash value: ~ 2 mm

SIDE C, Sector 13

Clash exists for all feet on both side US15 and USA15 except of end feet